



**MATATIELE**  
LOCAL MUNICIPALITY

# MATATIELE LOCAL MUNICIPALITY

Research and analysis of ward profiling: Ward based plans

**WARD 26**

**May 2018**

**TSHANI**  
CONSULTING C.C.



Contents

1. Executive Summary of Ward .....4

2. Introduction.....4

3. Methodology.....5

4. Ward Overview .....5

5. Socio Economic Analysis .....6

6. Built Environment Assessment..... 14

7. Current Projects ..... 18

8. Ward Needs and Priorities ..... 19

9. Stakeholder within Ward ..... 19

10. Social Challenges within Ward..... 19

List of Tables

Table 1: SWOT Analysis – Community Based Planning Program 2017 (Data Collection) .....5

Table 2: Major Event within the Ward – Community Based Planning Program 2017 (Data Collection) .....6

Table 3: Programmes within the Ward – Community Based Planning Program 2017 (Data Collection) .....6

Table 4: Population Size and Distribution within the Ward – Community Based Planning Program 2017 (Data Collection) .....7

Table 5: Social Grant Dependency within Ward - Community Based Planning Program 2017 (Data Collection) .....8

Table 6: Child and Female Headed Households within the Ward - Census 2011 .....9

Table 7: Education Facilities within Ward - Community Based Planning Program 2017 (Data Collection)10

Table 8: Religious institutions- Community Based Planning Program 2017 (Data Collection)..... 11

Table 9: Health Care Facilities: Community Based Planning Program 2017 (Data Collection) ..... 11

Table 10: Community Halls - Community Based Planning Program 2017 (Data Collection) ..... 11

Table 11: Economic Activity - Community Based Planning Program 2017 (Data Collection)..... 12

Table 12: Tourism Activities - Community Based Planning Program 2017 (Data Collection)..... 13

Table 13: Agricultural activities- Community Based Planning Program 2017 (Data Collection) ..... 13

Table 14: Products produced within the Ward- Community Based Planning Program 2017 (Data Collection) ..... 13

Table 15: Existing Skills within the Ward: Community Based Planning Program 2017 (Data Collection) .. 14

Table 16: Access to Waste Removal - Community Based Planning Program 2017 (Data Collection)..... 14

Table 17: Source of Water supply within the Ward - Community Based Planning Program 2017 (Data Collection) ..... 15

Table 18: Access to sanitation- Community Based Planning Program 2017 (Data Collection) ..... 16

Table 19: Main source of energy within ward - Community Based Planning Program 2017 (Data Collection) ..... 16

Table 20: Roads and Bridges within the Ward..... 18

Table 21: Current project within ward- Community Based Planning Program 2017 (Data Collection) ..... 19

Table 22: Ward Needs and Priorities- Community Based Planning Program 2017 (Data Collection) ..... 19

Table 23: Stakeholders within the Ward – Community Based Planning Program 2017 (Data Collection) 19

Table 24: Social Challenges within Ward..... 20

List of Figures

Figure 1: Gender Distribution – Census 2011 .....7

Figure 2: Age within Ward Distribution – Census 2011 .....8

Figure 3: Language Proficiency within Ward – Census 2011.....8

Figure 4: Gender of Household Head - Census 2011 .....9

Figure 5: Types of Dwelling within Ward – Census 2011 ..... 10

Figure 6: Highest Level of Education within the Ward – Census 2011 ..... 11

Figure 7: Individual Monthly Income - Census 2011 ..... 12

Figure 8: Access to Solid Waste Removal - Census 2011 ..... 14

Figure 9: Source of water- Community Based Planning Program 2017 (Data Collection)..... 15

Figure 10: Access to Sanitation Facilities – Census 2011 ..... 16

Figure 11: Source of Energy used for Lighting within the Ward - Census 2011 ..... 17

List of Plans

Plan 1: Ward 26 Locality .....5

Plan 2: Education Facilities..... 10

Plan 3: Other Social Facilities..... 12

Plan 4: Access to Waste Removal - Census 2011 ..... 14

Plan 5: Access to piped water within the Ward - Census 2011..... 15

Plan 6: Access to Flush toilets - Census 2011 ..... 16

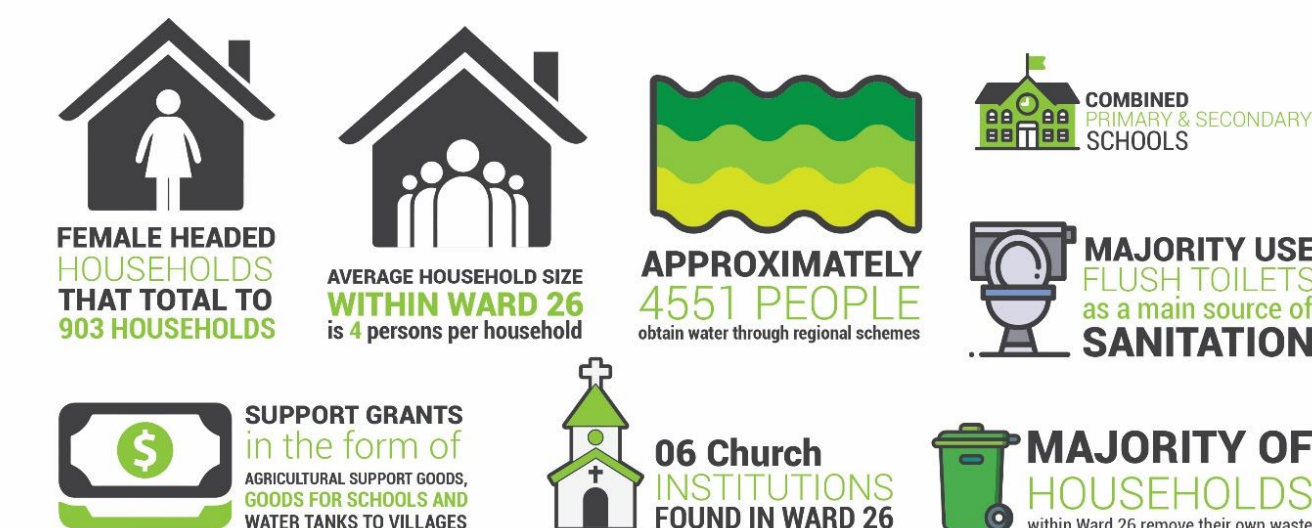
Plan 7: People using electricity for Lighting within the Ward - Census 201 ..... 17

Plan 8: Access to Electricity for Heating Within the Ward ..... 18

Plan 9: Roads and Bridges within the Ward - MLM GIS ..... 18

people still collect their water from dams, boreholes and springs. The collecting of unclean water from the dams and rivers can lead to a number of sicknesses as this water can contain pathogens like E-Coli.

The settlements in the ward show that majority use flush toilets, however the rural villages do still need proper sanitation. The provision of electricity in ward relatively high. The community is reliant on electricity and candles for lighting. Wood and electricity is mostly used for heating and cooking respectively. The use of solar energy must be promoted and educating communities on renewable energy is paramount.



## 2. Introduction

The Matatiele Local Municipality (MLM) appointed Tshani Consulting CC for the analysis and ward profiling for the 26 wards within MLM.

The purpose of this report is to review the current the Ward Based Plan prepared for Ward 26 and the LM that was developed in 2014. Through this exercise the ward profiling ensures the prioritisation of projects and channelling such projects into places of need.

The report serves as the analysis and profiling of Ward 26.

### 2.1. Locality

Ward 26 is surrounded by wards 21, 19, 20, 3, 9, 5. As depicted in the plan below, the main villages within Ward 26 are Cedarville Town, Black Diamond, Khorong Koali Park, Shenxa, Gobizembe/Magasela, Khorong Koali Ext. Mzingisi Location, Sandfontein Farm, Matshemula Farm, Bultfontein Farm. It is to be noted that all Wards which have been listed were identified through the community outreach programmes. The Village names captured on plans are as per the villages which exist on the GIS and Census databases.

The following sections have been identified and populated as part of the analysis for Ward 26. The headings which have been covered are seen as critical topics for the ward analysis. When broken down one can properly understand and interpret the spatial economic status quo and development trajectory of the Ward.

## 1. Executive Summary of Ward

Ward 26 comprises of the villages of Cedarville Town, Black Diamond, Khorong Koali Park, Shenxa, Gobizembe/Magasela, Khorong Koali Ext. Mzingisi Location, Sandfontein Farm, Matshemula Farm, Bultfontein Farm. Cedarville town is one of the primary nodes in the MLM. Ward 26 comprises of the majority of the farms found within the MLM. There is approximately a total population of 8892. The gender split within the LM is made up of 52% female and 48% males.

Within the ward, there appears to be a number of female headed households that total to 903 households. From these households, the majority are from Cedarville Town. Shenxa shows the minimum number of female headed households. The average household size within ward 26 is 4 persons per households.

Ward 25 is commonly seen as an agriculture -centred ward. Many of the farms and wetlands are found within the ward. The economy of the wards is reliant on the farming activities. A range of products are found within the wards including fresh produce, livestock, and meat, milk and grain products. The town of Cedarville still lacks services such as banking facilities, supermarkets and health facilities.

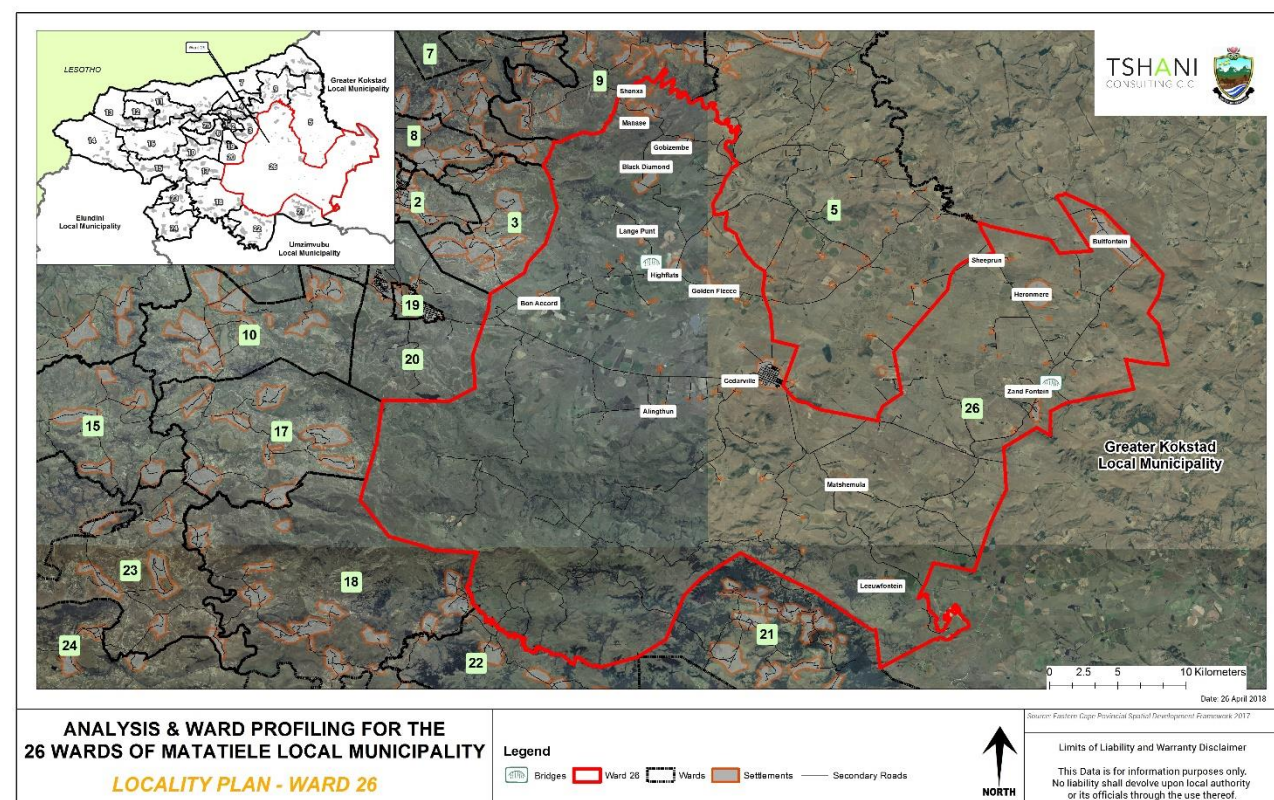
This ward shows a significant number of educational facilities; the recorded facilities are combined, primary and no secondary schools were recorded in Ward 26. These schools are located in the various villages of ward 26. There is also a special school, Sive special school. This is the only special school within MLM.

There are no health facilities within the ward. Mobile clinics visit the ward on a monthly basis in the following areas; Gobizembe, Black Diamond, Matshemula, Sandfontein, Bultfontein and Cedarville. The absence of permanent health care facilities means clinics located in neighbouring wards provide for basic primary health services such as family planning, basic check-ups, and immunization for Ward 26.

The majority of people in Ward 26 have their waste removed by the municipality. The municipality provides a weekly waste collection service only in Cedarville, Khorong and Mzingisi. In other areas of the ward, households dispose their own waste. Dumping waste is a hazard to human health and the natural environment.

Most of the water in the ward is provided by the District municipality. Ward 26 has approximately 4551 people which obtain water through regional schemes. Despite the 4551 people that have access to piped tap water a number of





National Arbor Week	2017	Forestry & fishery ministers handed over 200 fruit trees in the ward for and more than hundred people benefited.
Wild Fires	2014	Many deaths occurred in Cedarville ,many human and livestock deaths

Table 2: Major Event within the Ward – Community Based Planning Program 2017 (Data Collection)

### 4.3. Services/ Infrastructure and Programmes Within the Ward Within The 5-Year Period (2012-2016)

Ward 26 has experienced a fair amount of social and engineering infrastructure investment in the 2012-17 financial year. It is evident that the benefits of these projects have benefited the ward as well as the municipality as a whole.

Type	Year	Beneficiaries	Status / present condition	Impact
Maluti Special School	2014	Learners living with disabilities	95%	To be opened in 2018
Eskom Upgrading Power Station	2012	Ward 26 And Surrounding Areas	Complete	Improved the lives of the people and also making it safer .
Roads And Public Works Offices Upgrade	2017	Ward26	On Process	The unemployed benefited by this project, and accessibility.
Khorong Koali Park Street Surfacing	2014	Khorong Koali Park Residents	Complete	Job creation and accessibility.
Khorong Koali Ext 201 house Rectification	2014	Khorong Koali Ext 201 Beneficiaries	Complete	Beneficiaries received the houses in excellent conditions and also created employment.
ANDM sewerage upgrade/Zanamanzi water project	2012	Cedarville residents	Completed in 2014	hygiene
ANDM Upgrading Cedarville Water Scheme	2017	Residents At Large In Cedarville	Not Completed yet	The Capacity Of water will be boosted.
ANDM water meter installation/Sebata contractors	2015-2016	residents	Complete but community need a workshop with a contractor	Improvement from the last meters we have
Imfuyo Emerging Farmers Association	2012 to date	Cedarville Farmers	Progressing	Got Grazing Camps From Mlm
Black Diamond Grain Sa	2015	20 Farmers	Progressing	Skills developing
Maize Production Projects	2012	Farmers in surrounding areas	Progressing	Boosting The Economy Of The Country

Type	Year	Beneficiaries	Status / present condition	Impact
Our Little People Pre - School	2012	Pre-scholars	Progressing At Mzingisi Location House No 15	Education is provided before schooling.
toilet paper manufacturers	2012 to date	Laphumikhwezi youth project	Implementing Stage	Toilet Papers Rolls And Machinery Available for job Creation.
Farmers Stock Owners	2012	Cedarville Farmers Association	Livestock Auctions held Monthly	Farmers Selling Their Cattle.
Cedarville Street Gravelling And also benefiting DAX B&B	2015 2015	Residents Owner	Completed Functioning	People Were employed. Promoting Tourism In The Ward
Cedarville Town Hall & Mzingisi hall	2017	Community	Renovation to continue	Residents Hiring the hall and the community meetings
Women's Day	2017	Residents	Many People Attended The Event	Awareness to women on protection.
Grass Cutting	2012 to date	5 employees	Fair/but there is a room for improvement	Maintaining the grass in Cedarville.
EPWP	2012 to date	Adults & Youth	Maintaining Alfred Nzo & Matatiele Local Municipality Assets in ward 26	Employment for the people.

Table 3: Programmes within the Ward – Community Based Planning Program 2017 (Data Collection)

## 5. Socio Economic Analysis

### 5.1. Population Profile

The sub sections below provides an analysis of the population profile of ward 26.

#### 5.1.1. Population Size and Distribution

The total population of Ward 26 is 8 892.



LIST OF VILLAGES/ LOCATIONS/SUB AREAS	OTHER NAME/S FOR THE VILLAGE/ LOCATIO N	NUMBER OF HOUSEHOLDS			POPULATION SIZE (NUMBER OF PEOPLE)		
		Communit y Feedback	Censu s 2011	Projected Househol d by 2050 growing at 0.3% Per Annum	Communit y Feedback	Censu s 2011	Projected Populatio n by 2050 growing at 0.4% Per Annum

Cedarville Town		207	1161		1106	4410	
Black Diamond	Menjin	128	87		630	612	
Khorong Koali Park		385			1808		
Shenxa	Makhoba A/A	260	303		1000	1002	
Gobizembe/Magase la		183	135		915		
Khorong Koali Ext	Dark City	201			1902		
Mzingisi Location		106			606		
Sandfontein Farm		90			300		
Matshemula Farm		12			48		
Bultfontein Farm		72			260		
Total Population - Ward 26:		1644	1665	1838	8575	8892	10 103

Table 4: Population Size and Distribution within the Ward – Community Based Planning Program 2017 (Data Collection)

### 5.1.2. Gender Distribution

The chart below depicts that 52% of the total population of Ward 26 are female. This is typical of most wards within Matatiele. This statistic also speaks to the table below on child headed households.

*The growing distribution of females within the ward necessitates the provision of support for increased fertility demands and maternal support.*

### Gender Distribution

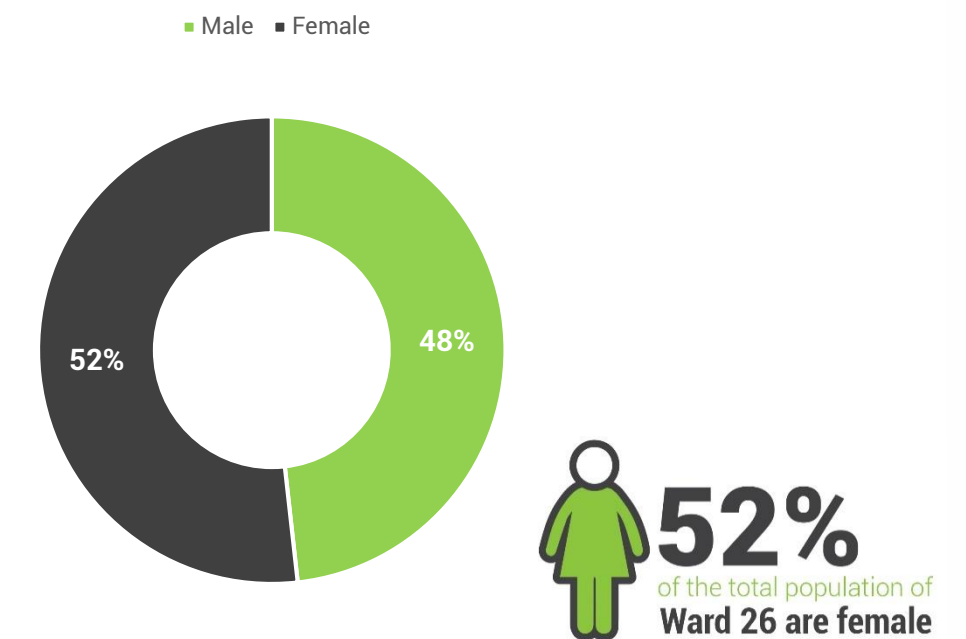


Figure 1: Gender Distribution – Census 2011

### 5.1.3. Age

The dominant age group in Ward 26 is the classified age group of 0-4yrs. The population of this ward is dominated by younger people (00-19). There is a sharp decline in the number of people per age group from ages 20 years and older.

*This community certainly needs to invest more in educational institutions (schools and crèches) and employment opportunities in order to attend to the needs of the youthful population.*



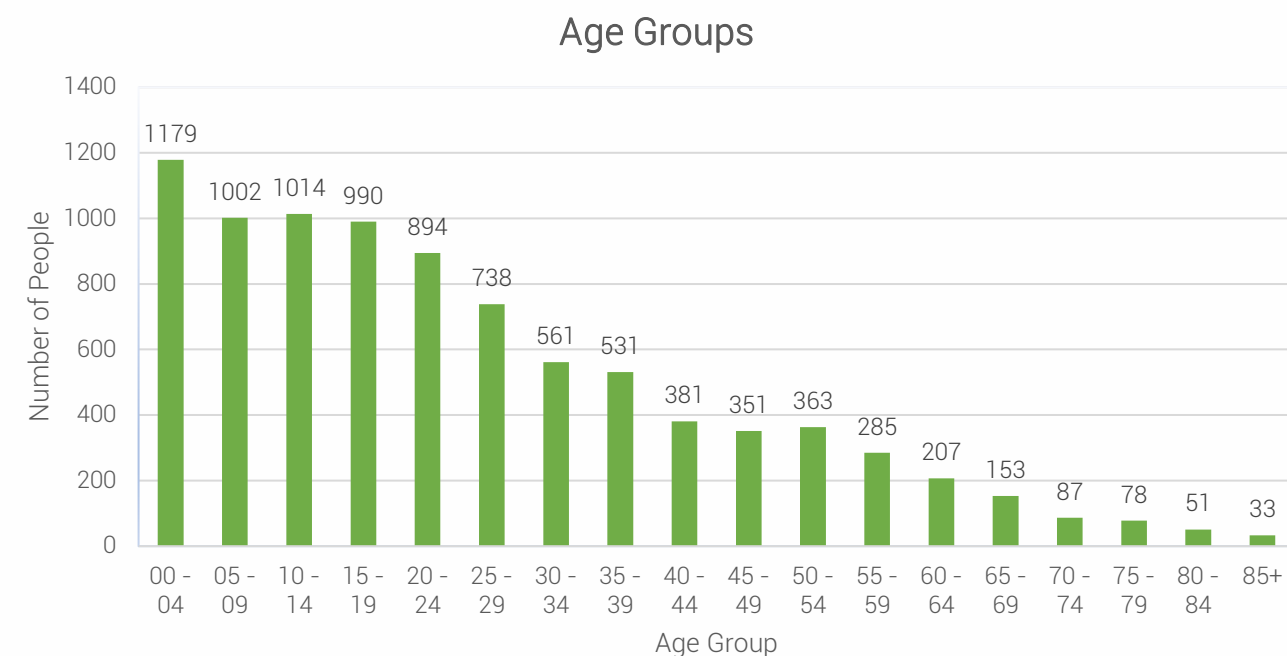


Figure 2: Age within Ward Distribution – Census 2011

#### 5.1.4. Language Distribution

It is evident that the most spoken language in Ward 26 is isiXhosa, followed by Afrikaans. The language preference correlates to the racial split within ward 26 and is an indication of the language preference which people appreciate.

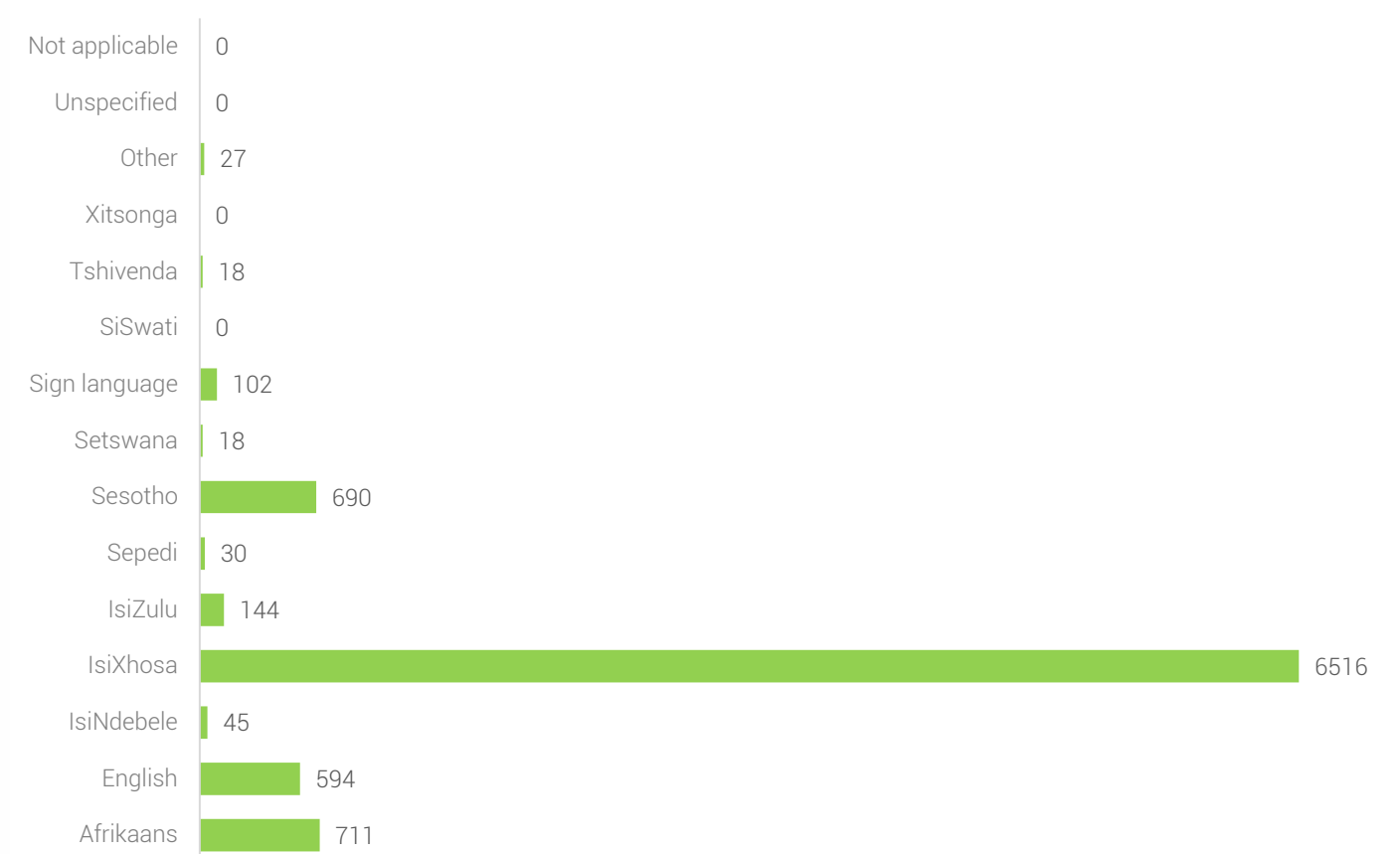


Figure 3: Language Proficiency within Ward – Census 2011

#### 5.1.5. Social Grants

The dependency on grants within Ward 26 continues to be a major challenge. The most assistance needed was the provision of water tanks. There was also social assistance in the form of food parcels and provision of pesticides.

TYPE OF SOCIAL ASSISTANCE OFFERED	NUMBER OF HOUSEHOLDS
	Community Feedback
SASSA Food Parcels	
Matatiele Local Municipality (SPU) Assisted Thusanang organization with seedlings, watering cans,pesticides, fertilizers.	83
School Uniform And Food Parcels For Kenesly Primary School Donated By Masangane Ngo	14
EDA Ngo- Provided Water Tanks To Three Villages- which is Bharini, Thebane and Black Diamond which it is a donation from Spanish donor	161

Table 5: Social Grant Dependency within Ward - Community Based Planning Program 2017 (Data Collection)



Total	23	27	913	903
-------	----	----	-----	-----

Table 6: Child and Female Headed Households within the Ward - Census 2011



The graph below indicates that approximately 41% of households in ward 26 are headed by women.

Gender of Household Head

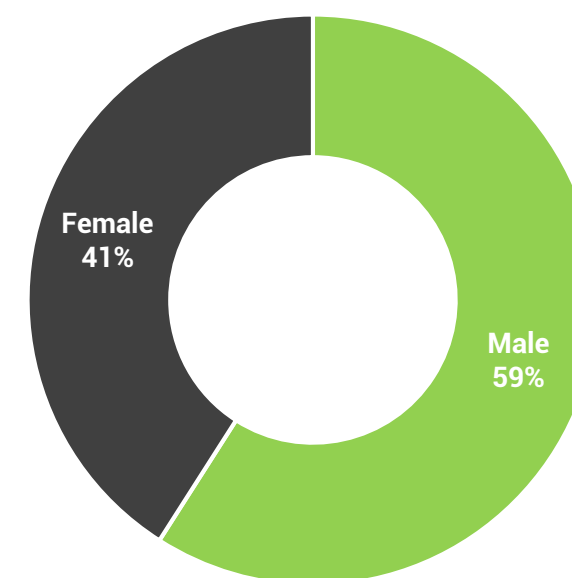


Figure 4: Gender of Household Head - Census 2011

### 5.2.3. Household Dwelling types

The majority of people in Ward 26 live in a brick/ concrete constructed house. There is a strong presence of traditional dwellings. The housing and backyard flats are a popular settlement feature within the Ward. *There needs to this be greater Land Use Planning By-Law enforcement to ensure that the type of development is controlled and managed.*

### 5.1.6. Indigent Support

A rural municipality with a high dependency rate on social assistance; MLM has a large number of indigent households. Particularly for this ward, There a number of indigent households. Although the number is high, it is only a few households that receive indigent supports form the municipality. The challenges that affect to the provision of such support, include beneficiaries with no proper documents, challenges with verification of beneficiaries amongst other issues. In this ward, MLM provides indigent support in the form electricity, solar and refuse removal service. The current indigent support register shows 321 for ward 26.

## 5.2. Household Profile

The section below details of households within Ward 26 in terms of their size, gender of heads of households and distribution.

### 5.2.1. Average Household Size

Ward 26 has an average household size of 4 persons per household.

### 5.2.2. Heads of Households

The issue of child headed households remains a major challenge in Ward 26 and MLM alike. There is a need to prioritise support in the form of community awareness and social programmes in keeping with teenage pregnancy and contraception. The challenges is exacerbated by the trends of a larger part of the population which is represented by females also heading many households.

Based on the table below it is evident that the issue of child headed households is a major issue. Based on the community survey, Cedarville has 594 female headed households and also the highest number of child-headed household.

Villages	Child-Headed households		Female-Headed Households	
	Community Feedback	Census 2011	Community Feedback	Census 2011
Cedarville Town	13	21	529	597
Black Diamond	3	3	100	63
Khorong Koali Park				
Shenxa		0	150	36
Gobizembe/Magasela	5	3	124	96
Khorong Koali Ext				
Mzingisi Location				
Sandfontein Farm				
Matshemula Farm	2		10	
Bultfontein Farm				

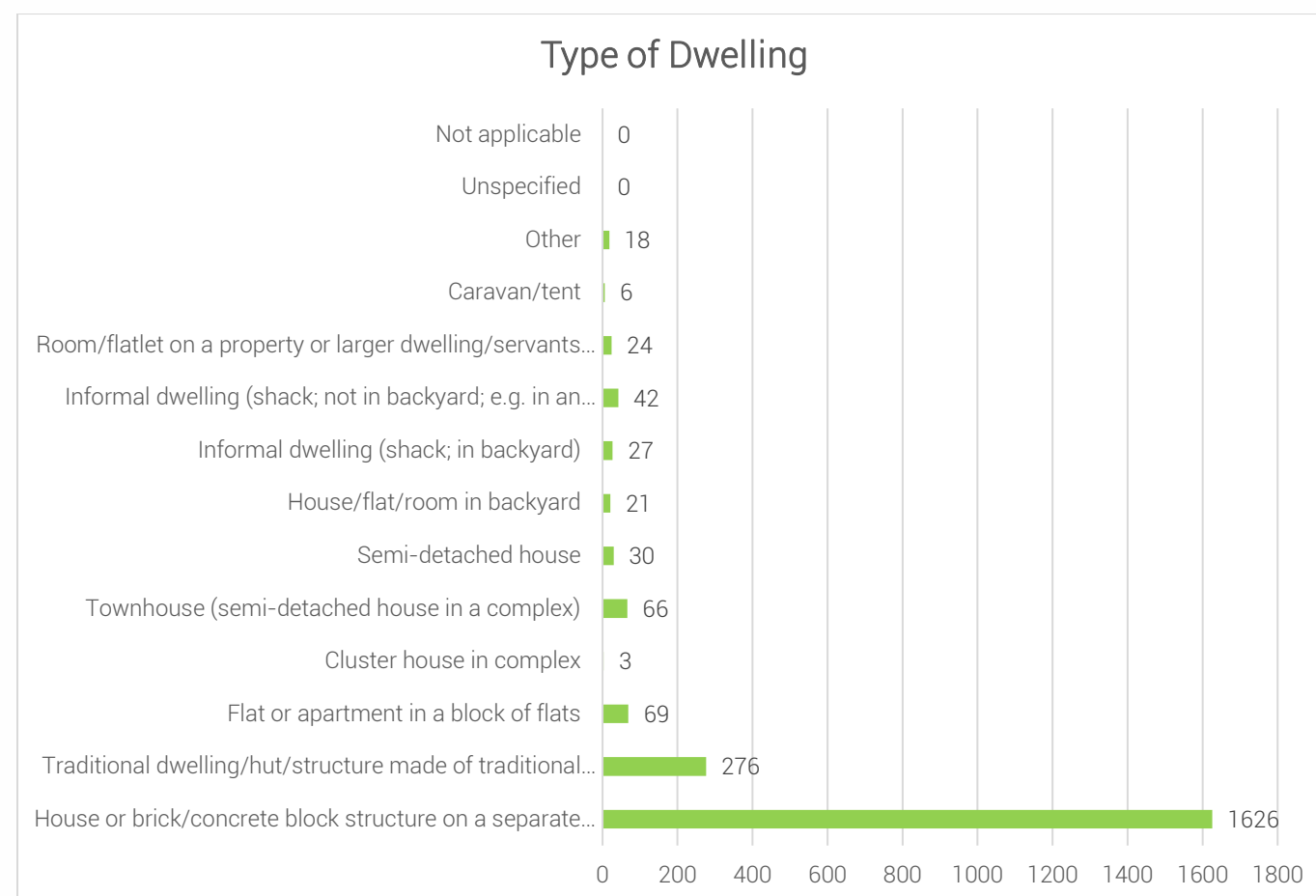


Figure 5: Types of Dwelling within Ward – Census 2011

## 5.3. Social Profile

### 5.3.1. Education Facilities: Community Feedback

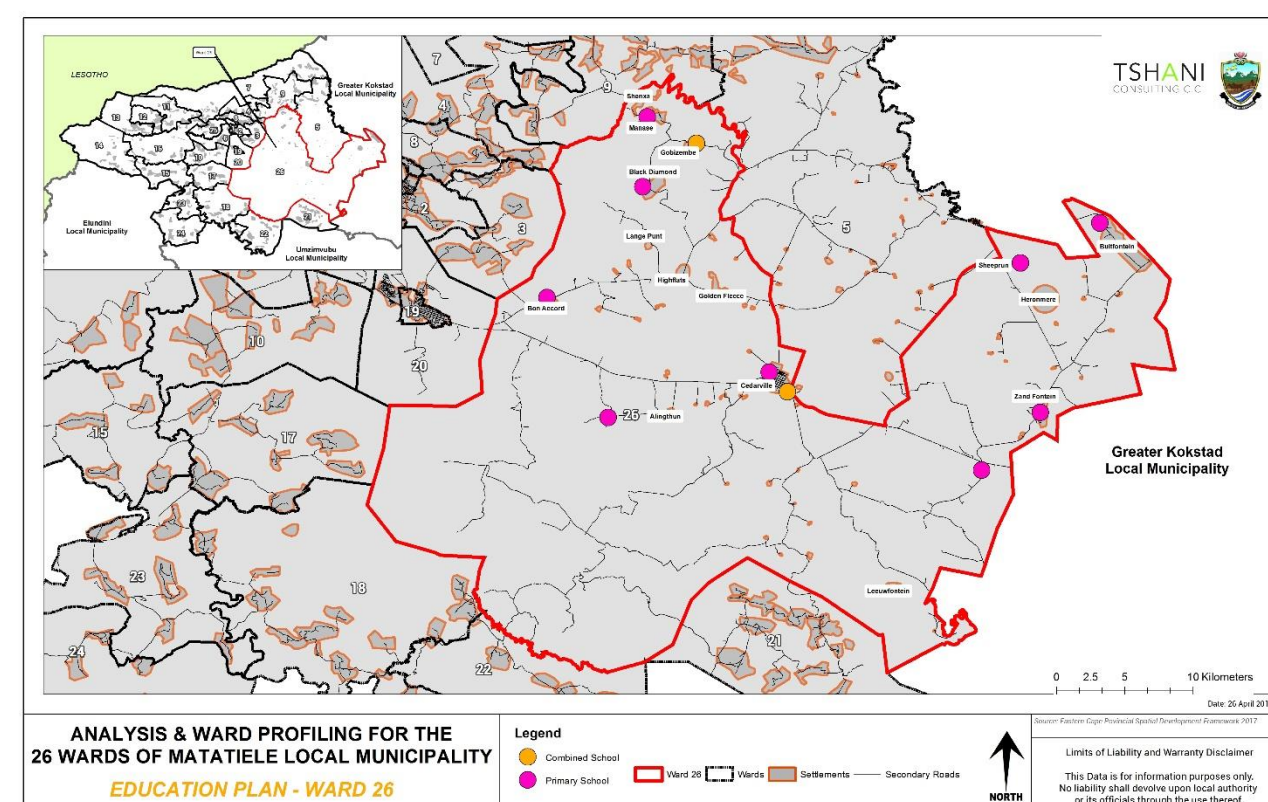
The range of schools identified in the table below was developed from the community base planning survey in November 2017.

NAME	TYPE	AREA LOCATED	NUMBER OF LEARNERS
Sive/Maluti Special School	Special school	Cedarville	300
Our Little People Pre -School	preschool	Cedarville	100
Kenersley Primary School	primary	Cedarville	430
Cedarville Public School	combined	Cedarville	960
Thokozani Primary School	primary	Shenxa	600

Black Diamond Secondary School	Combined	Black Diamond	135
Sandfontein Primary School	primary	Sandfontein	60
Thembelitsha school	primary	Gobizembe	205
Molisane primary school	primary	farm	30
G.I Primary	primary	Cedarville	604

Table 7: Education Facilities within Ward - Community Based Planning Program 2017 (Data Collection)

### 5.3.2. Education Facilities



Plan 2: Education Facilities

### 5.3.3. Level of Education

The number of individuals with no schooling is also very high. The category of "no schooling" may comprise of the population whom are not old enough to be attending school. The stats below indicate that there needs to be more focus on increasing the number of matriculants within the ward. There also needs to be emphasis on provision of employment opportunities for matriculants. These are partnerships that need to be fostered with the LM.



Griqua Independent	Sandfontein	1
Griqua Independent ,Anglican	Bultfontein	2

Table 8: Religious institutions- Community Based Planning Program 2017 (Data Collection)

### 5.3.5. Health Care Facilities: Community Feedback

There are no health facilities within the wards. This is one of the major social challenges within the Ward. Mobile clinics monthly visits in some of the villages. Cedarville as a town needs a community health facility.

Name and type	Area located	Primary services provided
Mobile Clinic	All Villages- Gobizembe, Black Diamond, Matshemula, Sandfontein, Bultfontein, And Cedarville	Immunisation And minor ailments

Table 9: Health Care Facilities: Community Based Planning Program 2017 (Data Collection)

### 5.3.6. Community Hall: Community Feedback

There are three community halls within the Ward. The community halls are located in Mzingisi, Sandfontein and Bultfontein.

Name and type	Area located
Mzingisi Community Hall	Mzingisi Location
Sandfontein Community Hall	Sandfontein
Bultfontein Community Hall	Bultfontein

Table 10: Community Halls - Community Based Planning Program 2017 (Data Collection)

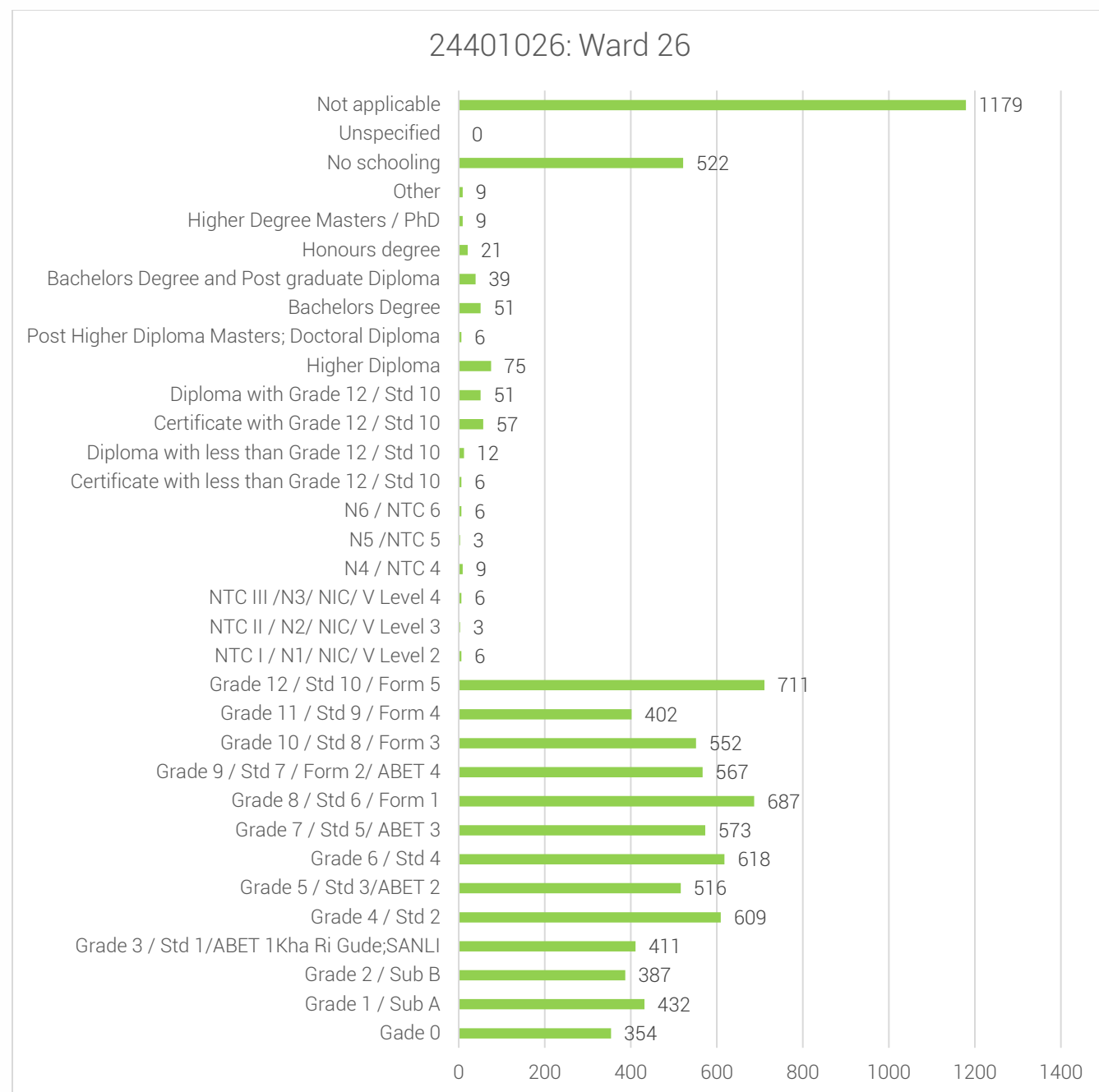


Figure 6: Highest Level of Education within the Ward – Census 2011

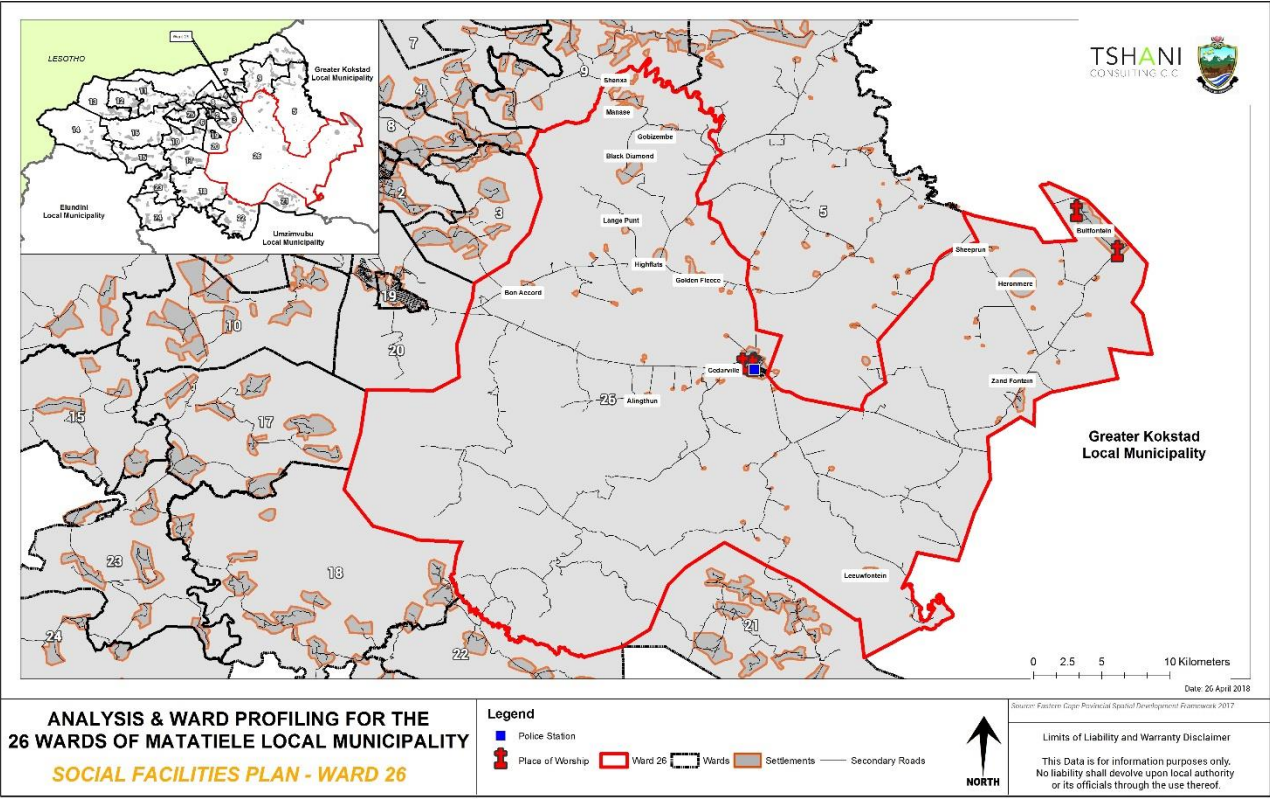
### 5.3.4. Churches and Religious Organisations: Community Feedback

The range of religious facilities identified in the table below was developed from the community feedback sessions. There are 9 churches within Maluti and 1 located in Motsekuwa.

NA ME	LOCATION/AREA	NUMBER
Methodist, Romans Catholic, Anglican, Zion, Full Gospel, Dutch,Bible life family church and NG church	Cedarville Town	7
Methodist	Gobizembe	1
Apostolic, Church	Shenxa	2
Roman Catholic Church ,Methodist, Apostolic, Zion	Black Diamond	4

5.3.7. Other Social Facilities

The map below spatially identifies places of worship and police stations.



Plan 3: Other Social Facilities

5.4. Economic Profile

5.4.1. Employment Status and individual Monthly Income:

Unemployment is a big challenge in the ward, as it is with the rest of the municipality. The ward is characterised by a large population that is not of a working age. The majority of people at of a working age are not employed, mostly these are youth.

Over half of the population of ward 26 receives less them R800 or no income monthly. This community has low to medium income earners. There is therefore a high dependency of social grants.

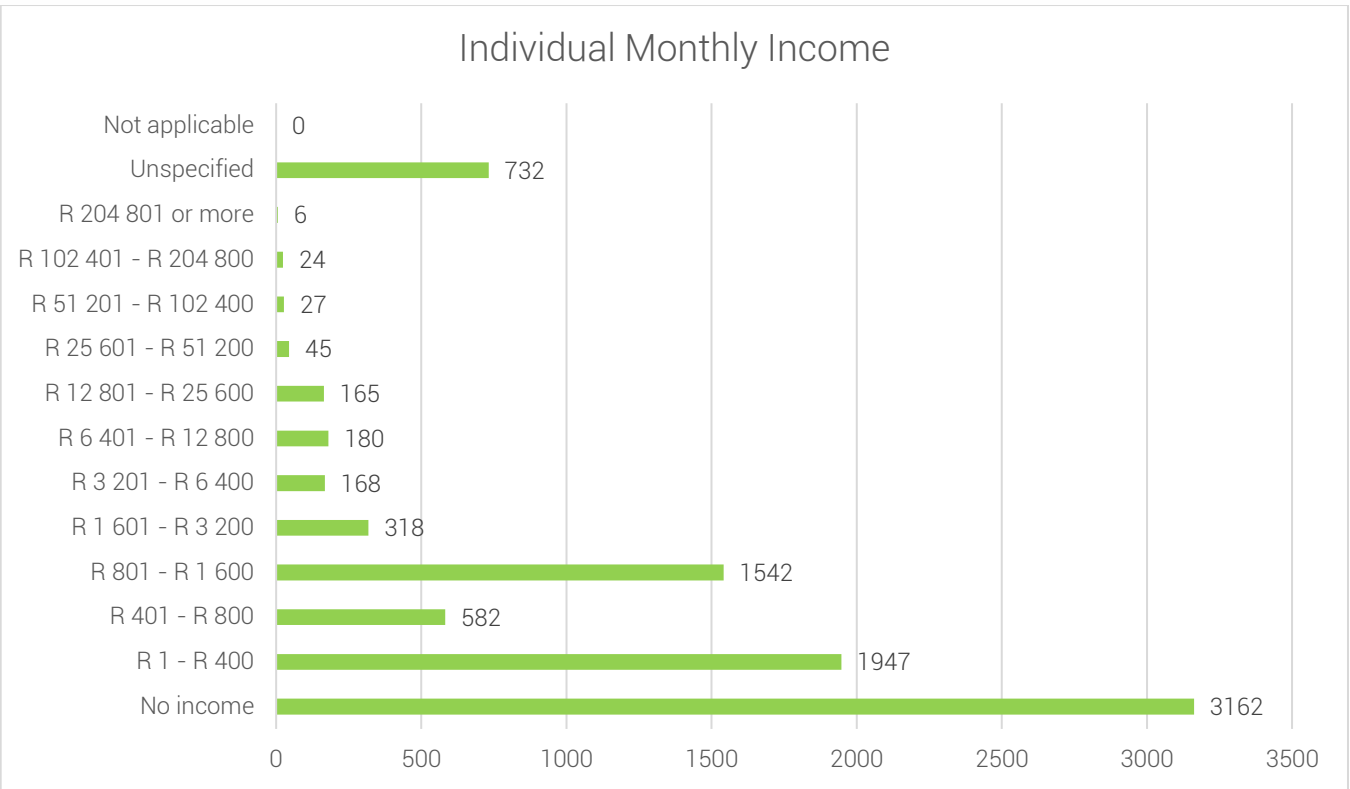


Figure 7: Individual Monthly Income - Census 2011

5.4.2. Economic Activities: Community Feedback

It is noted that ward 26 enjoys a variety of economic activities within he ward. The LM needs to embark on more community awareness programmes and ensure there are social alternatives for youth within the villages as the present case indicate very poor recreation facilities. There is a need for focus to be placed on youth empowerment and education.

TARVENS, SALONS, ETC)	
TYPE	LOCATION
Spaza Shop	All Villages
Cafe	Cedarville
Food Shops	Cedarville Town
Hardware	Cedarville Town
Agricultural Industrial Shop	Cedarville Town
Hair Salon	Khorong Koali Park And Cedarville Town
Tavern	Shenxa,Cedarville Town
Shebeens	All Villages
Electrical engineering	Cedarville town
Building material	Cedarville town
B&B	Cedarville town

Table 11: Economic Activity - Community Based Planning Program 2017 (Data Collection)



### 5.4.3. Tourism Activities

There are a range of tourism facilities and services within the Ward. The indication of tourism facilities present indicates that there is room for growing a broader tourism base within Ward 26. Maluti is closely linked to the urban centre. There is a need for the municipality to consider what other local tourism products are available within the ward which may be harnessed through LED initiatives.

TOURISM ( INDICATE B&B'S, HOTELS, ATTRACTION SITES, ETC)	
TYPE	LOCATION
Daks B&B	Cedarville Town
Mzimvubu River	Cedarville
Mountains	Cedarville & Black Diamond
Pottery	Shenxa
Tribal Authority	Shenxa
Snakes	Black Diamond & Cedarville
Lacoster/Xam Or Lakabane	Cedarville
Tortoise	Ward 26 (surrounding areas)
Fishing	Mzimvubu/Tsoilike & surrounding dams.

Table 12: Tourism Activities - Community Based Planning Program 2017 (Data Collection)

### 5.4.4. Agricultural Activities

The community of ward 26 practises both commercial and subsistence farming for their agricultural products.

TYPE OF PRODUCTS	FOR HOUSEHOLD CONSUMPTION	FOR SELLING TO THE COMMUNITY
Cattle	Yes	Yes
Sheep	Yes	Yes
Goats	Yes	Yes
Horses	Yes	Yes
Poultry	Yes	Yes

Vegetables	Yes	Yes
Fruits	Yes	Yes
Grains	Yes	Yes

Table 13: Agricultural activities- Community Based Planning Program 2017 (Data Collection)

### 5.4.5. Products Produced in Wards

The table below indicates that products linked to agriculture are available within the ward that are locally produced. Such individuals responsible for these activities should be better supported and encourages to expand.

TYPE OF PRODUCTS	AREAS / VILLAGES	FOR HOUSEHOLD CONSUMPTION	FOR SELLING TO THE COMMUNITY
Grain	Black Diamond/Cedarville	yes	Yes
Dry beans	Black Diamond	yes	Yes
Milk	Cedarville farms	yes	Yes
Potatoes	All villages /farms	yes	Yes
Soya beans	Prospect farms	yes	Yes
Lucerne/sorghum	Dairy farms	yes	Yes
Crushed stone	Edendale mining	yes	Yes

Table 14: Products produced within the Ward- Community Based Planning Program 2017 (Data Collection)

### 5.4.6. Existing Skills

The ward constitutes of some diverse skills which is a major asset for the ward. Such individuals need to be further trained and opportunities to mentor other unemployed individuals within the community should be encouraged. The entrepreneurs within ward should also be given better access to market opportunities. There a broad range of professionally qualified individuals whom also are major assets for Ward 26.

TYPE OF SKILLS	EXISTING (INDICATE YES/NO)	WITH	TYPE OF SKILLS	EXISTING (INDICATE WITH YES/NO)
Carpenters	Yes		Pottery	No
Plumbing	Yes		Teachers	Yes
Builders	Yes		Police	Yes
Artists	Yes		Health Officials	Yes
Gardening	Yes		Accountants	Yes
Cooking	Yes		Engineers	Yes
Sewing	Yes		Lawyers	

Writing	Yes	Other (Indicate)	
Drivers	Yes	Fishing	
Farmers	Yes		

Table 15: Existing Skills within the Ward: Community Based Planning Program 2017 (Data Collection)

## 6. Built Environment Assessment

### 6.1. Access to Waste Removal

The community feedback session presented the following findings:

LOCATION	NUMBER OF HOUSEHOLDS SERVICES	FREQUENCY
Khorong Koali Park	382	Twice a week
Khorong Koali Ext	201	Twice a week
Mzingisi Location	106	Twice a week
Cedarville Town	207	Twice a week

Table 16: Access to Waste Removal - Community Based Planning Program 2017 (Data Collection)

The municipality provides waste removal service to in the areas identified on table 17 above. Other areas within the ward use their own refuse dumps.

### Solid Waste Removal

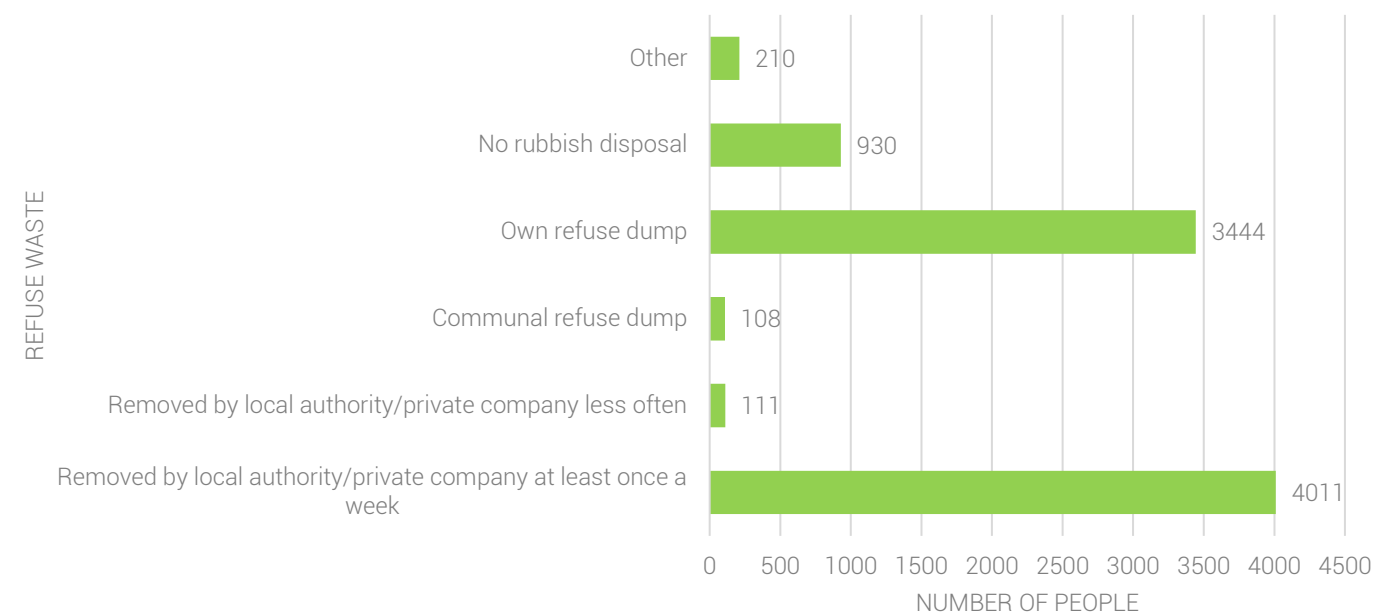
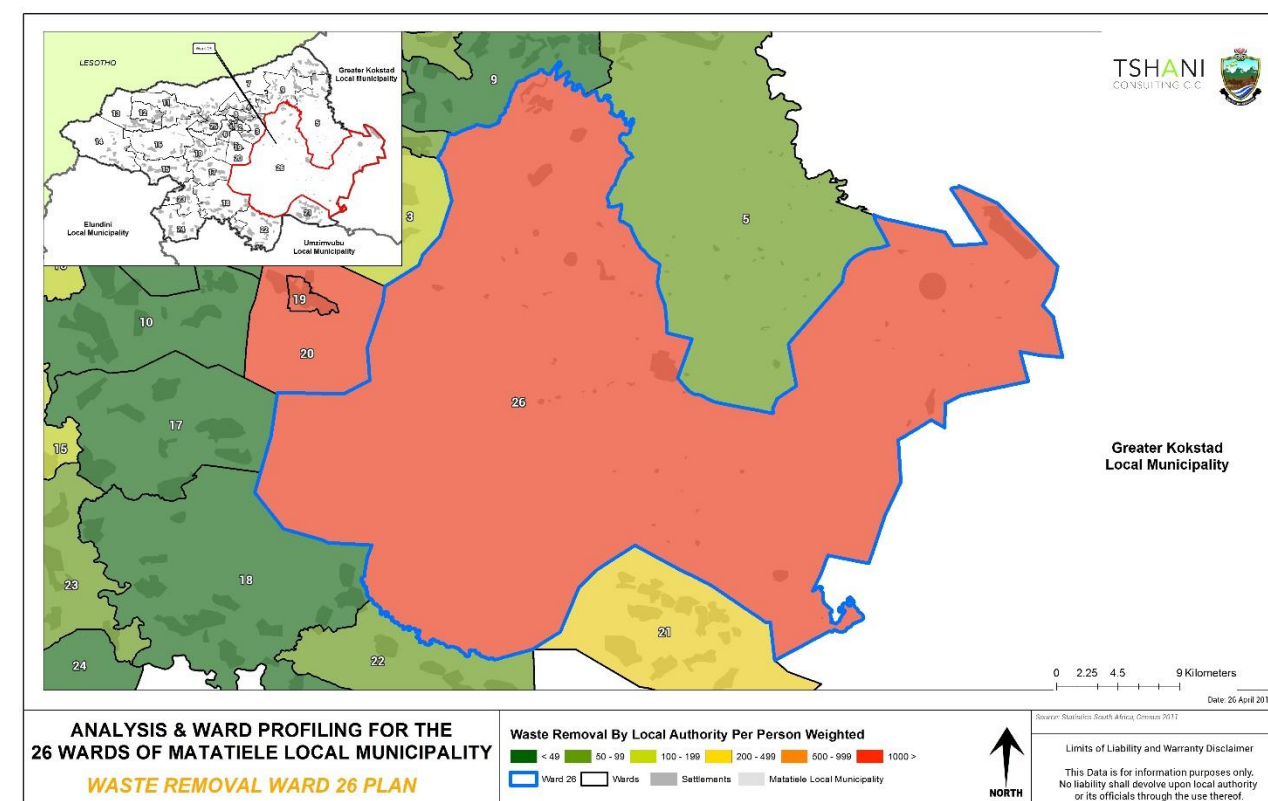


Figure 8: Access to Solid Waste Removal - Census 2011

Additional Notes:

- Waste removal is inconsistent, or the times are inconsistent. There is a short supply of bins for the resident to put their rubbish in. Residents should also be given plastic bags so that they can be able to secure their rubbish properly.



Plan 4: Access to Waste Removal - Census 2011

### 6.2. Access to Water

The main supplier of piped/ running water in ward 26 is provided by the district municipality. Areas within and closer to the town of Cedarville have access to piped water inside dwelling and within the yard. Community taps are available in the other settlements, boreholes are commonly used within the farms.

There are however areas within the ward that don't have access to running water; these include areas such as Shenxa and Gobizembe.



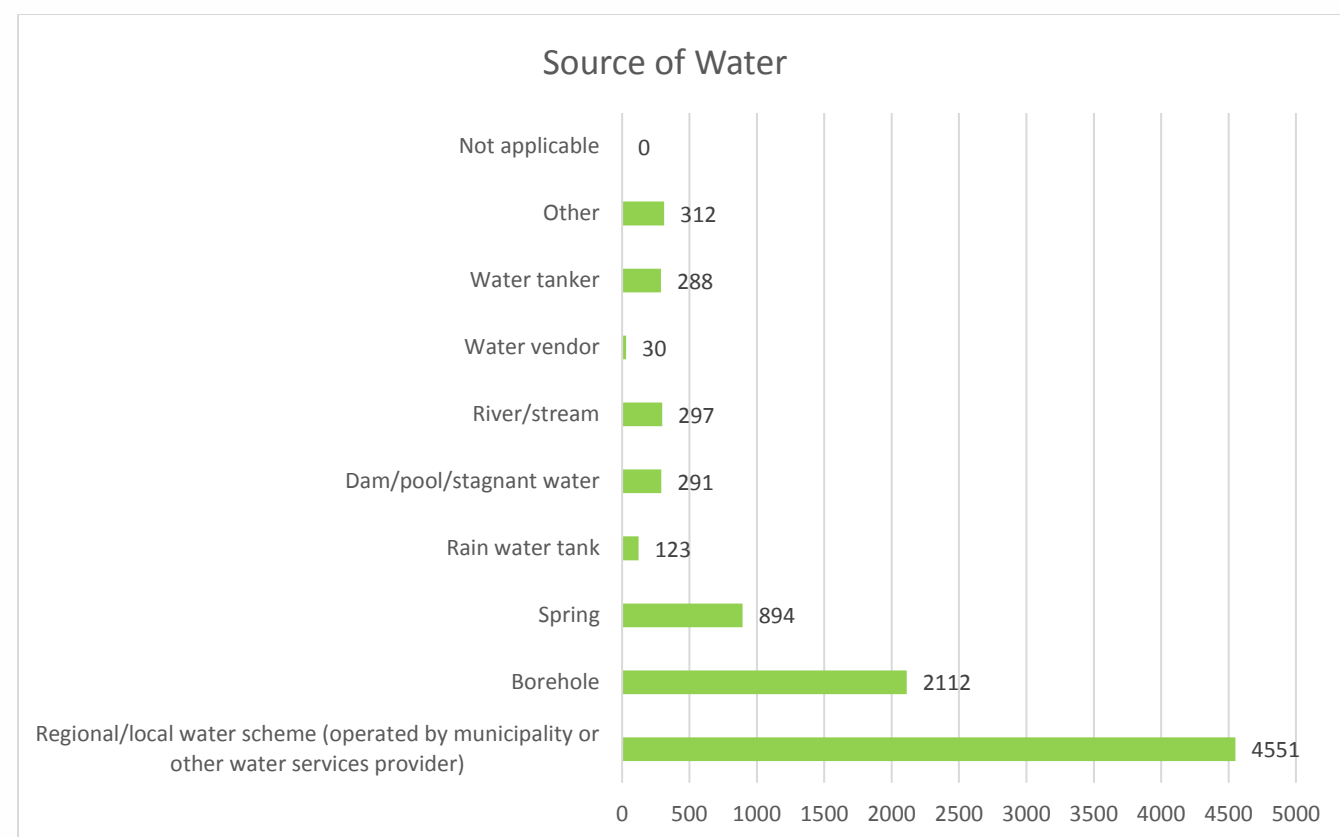
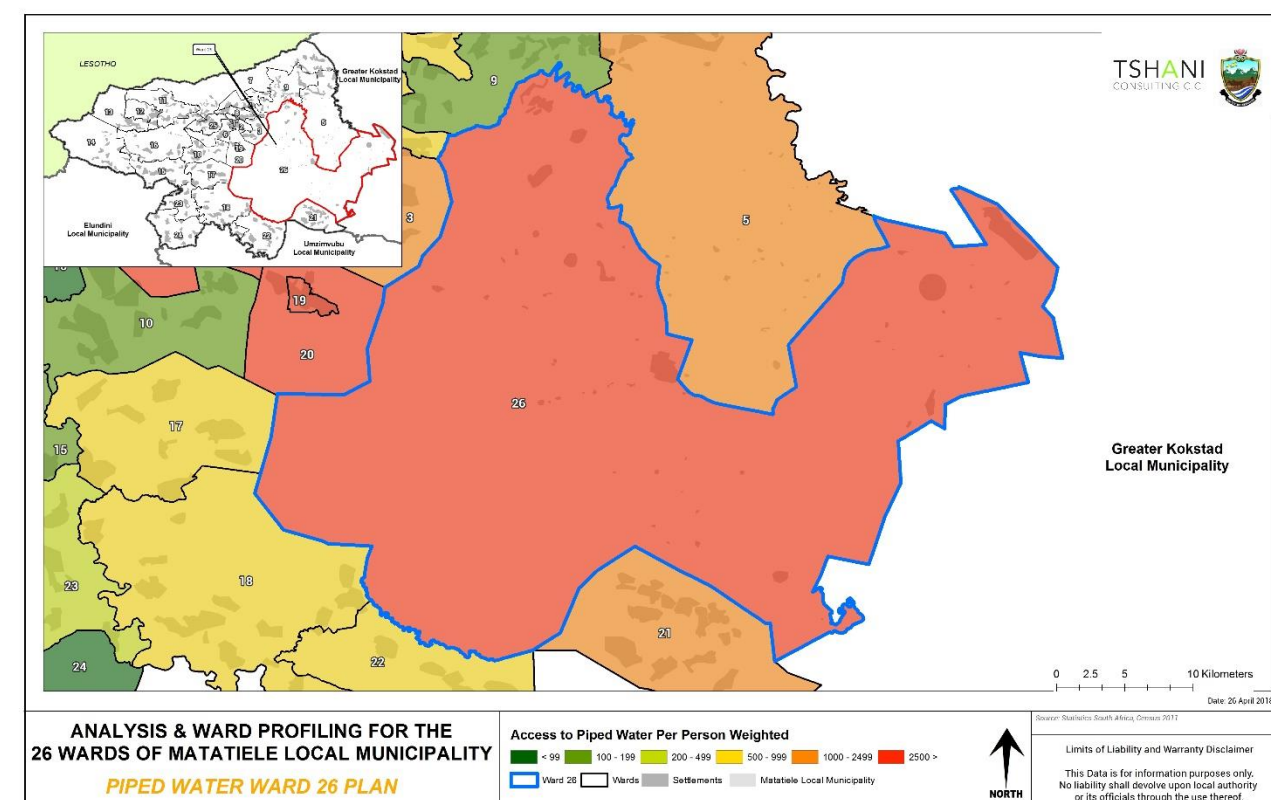


Figure 9: Source of water- Community Based Planning Program 2017 (Data Collection)

Village/Location	Community Taps	Water- Inside Yard	Water- Inside House	Boreholes	Draw Water From Streams, Dams, River
1.Mzingisi Location		yes	Yes	Yes	
2.Town		yes	Yes	Yes	
3.Khorong Koali Park		yes	Yes	Yes	
4.Khorong Koali Ext		no	Yes	Yes	
5.Coloured Section		Yes	Yes	Yes	
6.Shenxa	Not Yet			Yes	Streams
7.Black Diamond	Not Yet			Yes	
8.Sandfontein	Yes	Yes		Yes	
9.Bultfontein	Yes	Yes		Yes	
10.Gobizembe	NO			Yes	Streams And River
11.Matshemula	No				

Table 17: Source of Water supply within the Ward - Community Based Planning Program 2017 (Data Collection)



Plan 5: Access to piped water within the Ward - Census 2011

### 6.3. Access to Sanitation

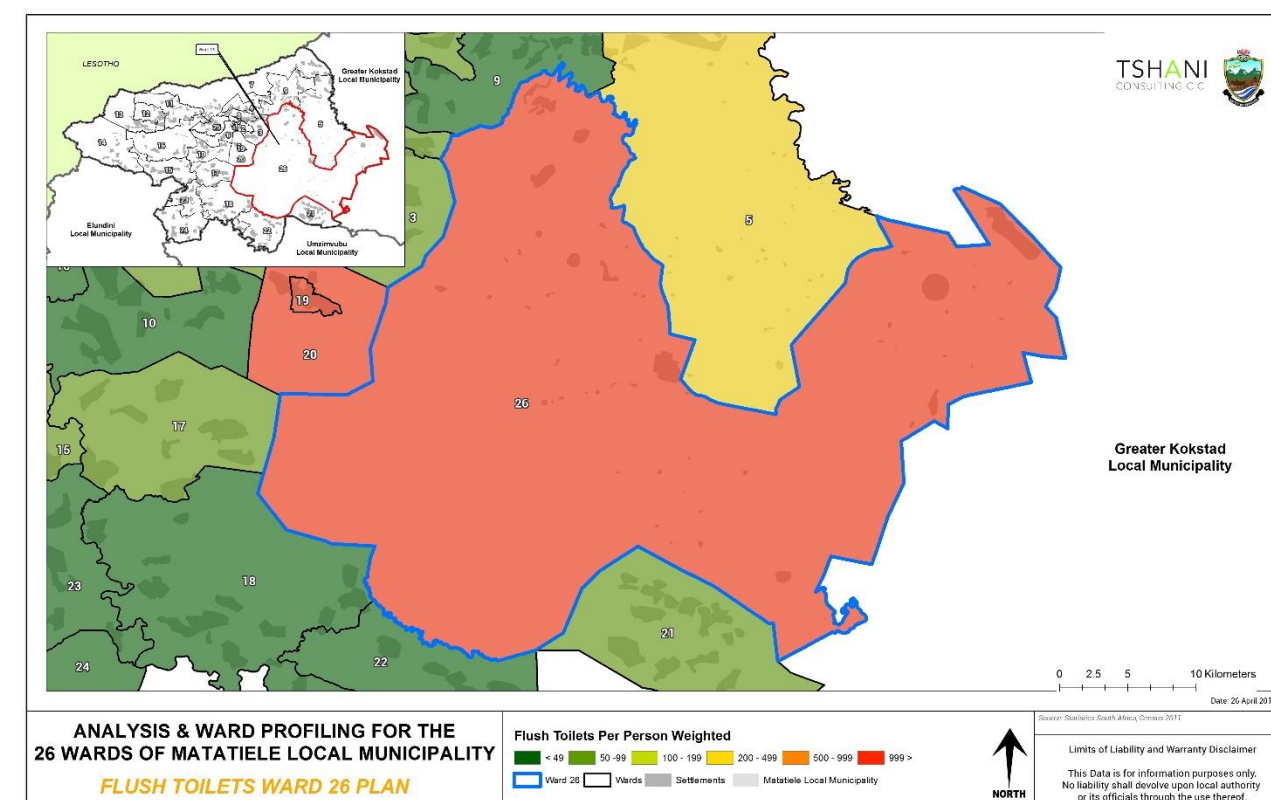
3708 people have access to flush toilets. 1734 people use pit toilets with no ventilation. Pit latrines are both unhygienic and dangerous, these sanitation facilities are also an environmental hazard as they contaminate the ground water and soil which leads to the outbreak of diseases like Cholera. A very significant number of people use pit toilets, the municipality should decrease this drastically to avoid social and environmental impacts. The map below illustrates that more than 1000 people have access to flush toilets.



Figure 10: Access to Sanitation Facilities – Census 2011

Village/Location	Ventilated Pit Toilets	Flush Toilets	Other
1.Mzingisi Location		Yes	
2.Khorong Koali Park		Yes	
3.Khorong Koali Ext		Yes	
4.Town		Yes	
5.Shenxa	Yes		
6.Black Diamond	Yes		
7.Bultfontein	Yes		
8.Sandfontein	Yes		
9.Matshemula	Yes		
10.Gobizembe	Yes		
11.Magasela	Yes		

Table 18: Access to sanitation- Community Based Planning Program 2017 (Data Collection)



Plan 6: Access to Flush toilets - Census 2011

#### 6.4. Main source of Energy within the Ward: Community Feedback

The main source of energy within Ward 26 is electricity and solar. This indicates that the level of service within the ward is relatively high. The analysis below further reiterates the status of electrification within the ward based on categories of lighting, heating, and cooking.

Village/Location	Electricity	Solar	No Electricity/Solar
Mzingisi Location	Yes		
Khorong Koali Park	Yes		
Cedarville Town	Yes		
Khorong Koali Ext	No	No	Yes
Matshemula Farm	No	Yes	
Gobizembe/Magasela	No	Yes	
Black Diamond Village	No	Yes	
Sandfontein Farm	Some	Yes	
Shenxa Village	No	Yes	
Bharini Farm	No	Yes	
Thebane	no	yes	

Table 19: Main source of energy within ward - Community Based Planning Program 2017 (Data Collection)



6.5. Main Source of Energy for Lighting

5085 of the people within the ward use electricity for purposes of lighting. A very few people are reliant on paraffin (444 people) and candles for lighting (3081 people). The map reiterates the point that more than 5000 people within Ward 26 use Electricity for the purposes of lighting.

The following settlements within the wards do not have access to electricity; Gobizembe; Khorong Koali EXT, Matshemla a farm, Shemnxa, Bharini Farm and Thebane.

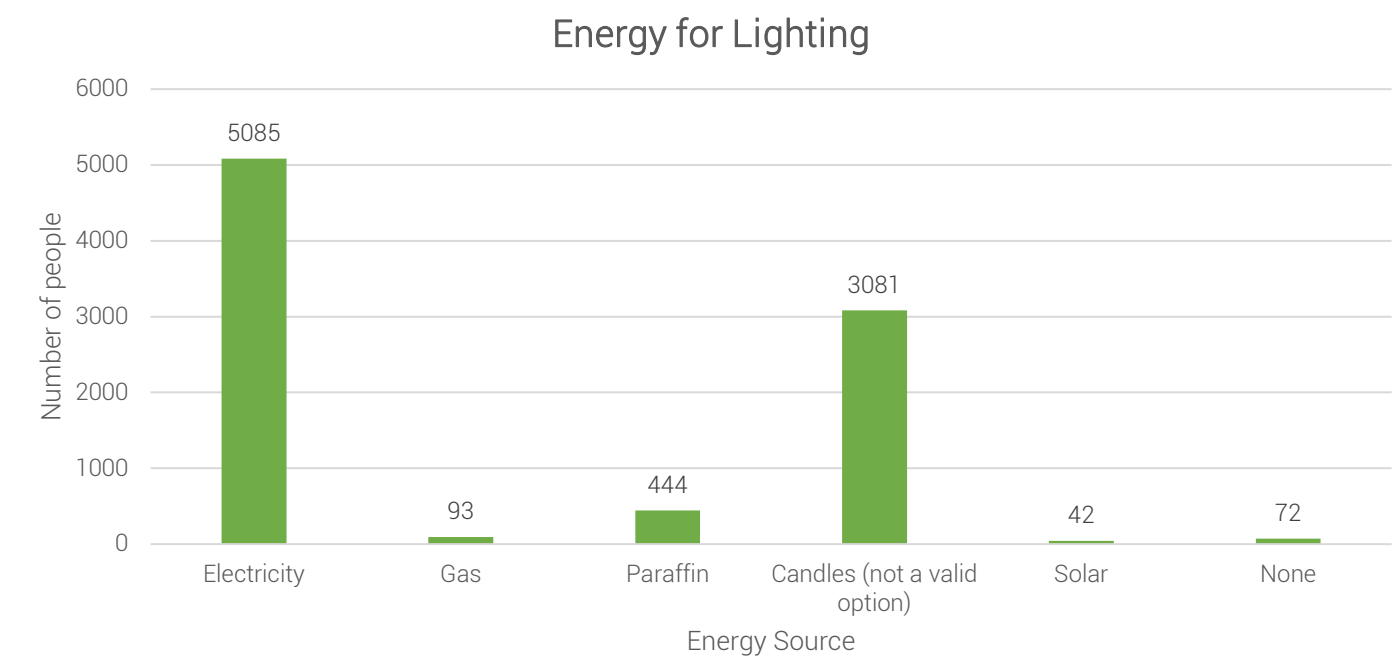
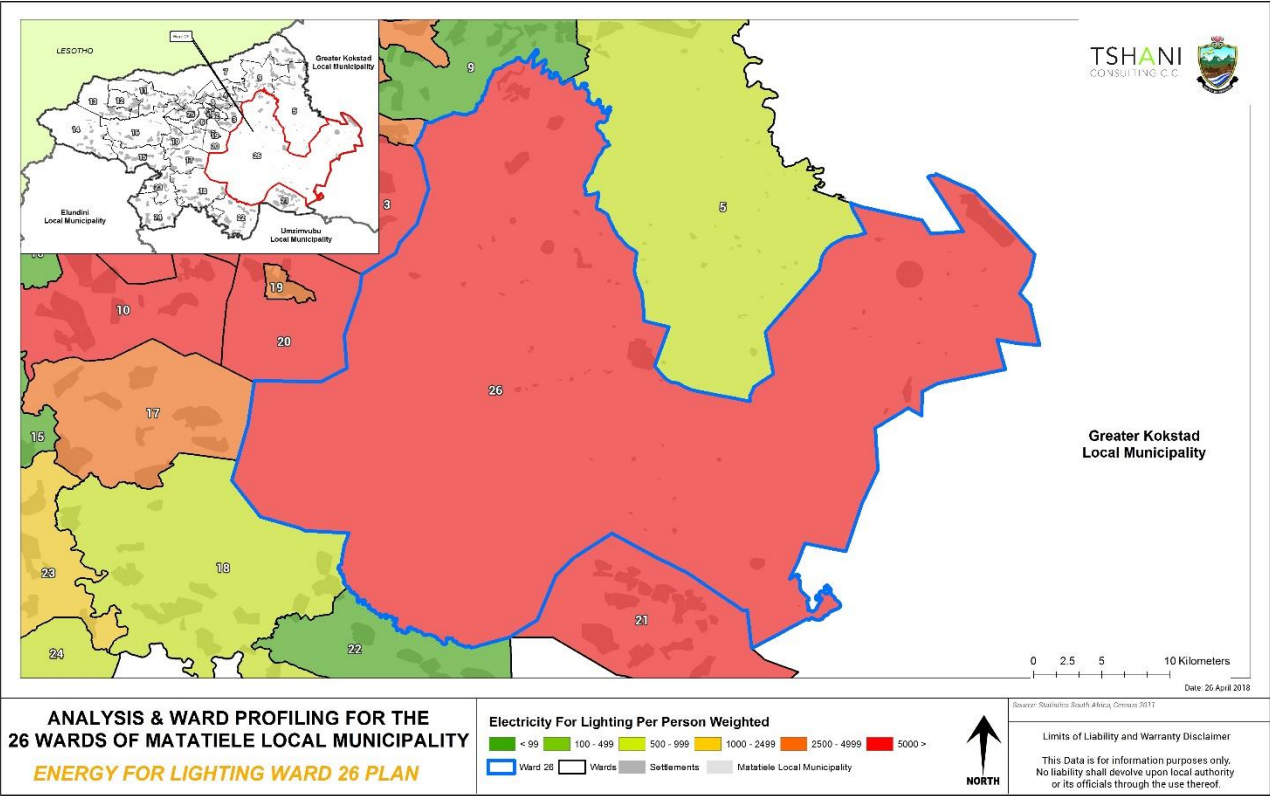
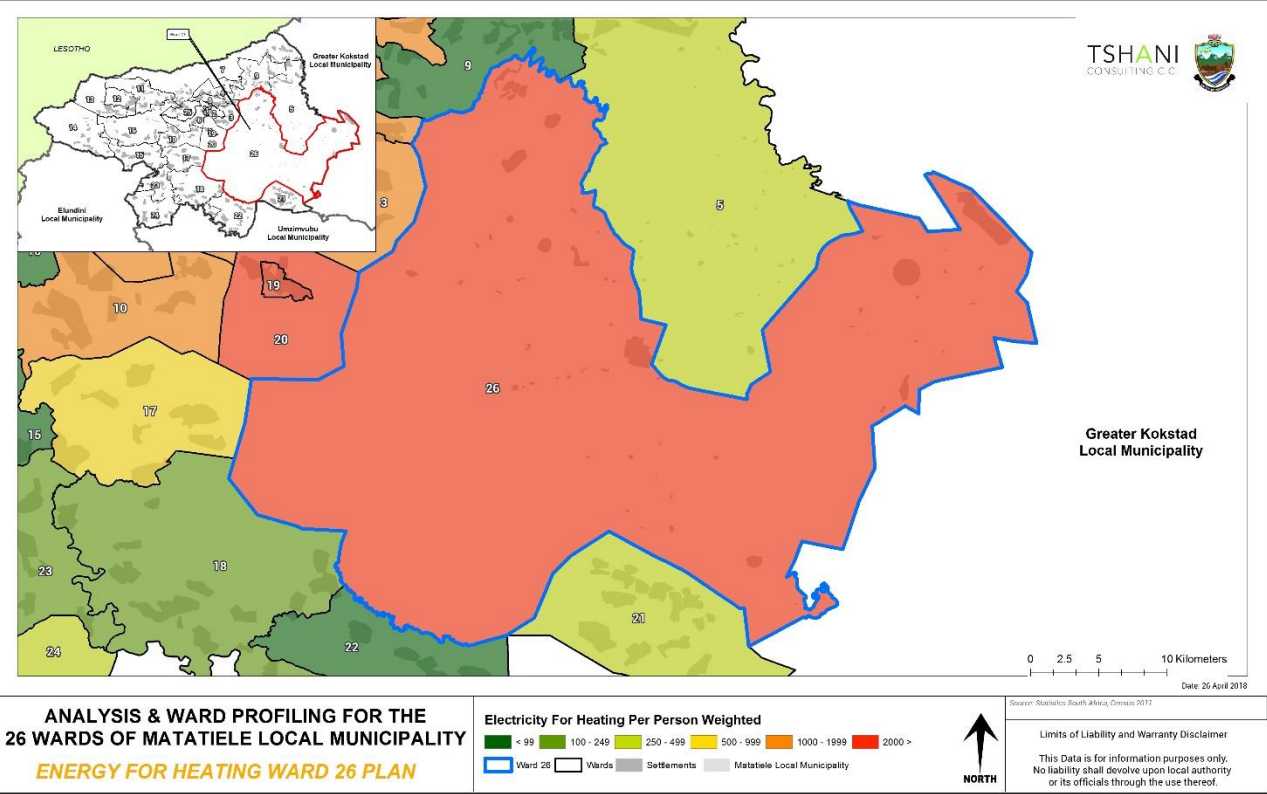


Figure 11: Source of Energy used for Lighting within the Ward - Census 2011



Plan 7: People using electricity for Lighting within the Ward - Census 2011



Plan 8: Access to Electricity for Heating Within the Ward

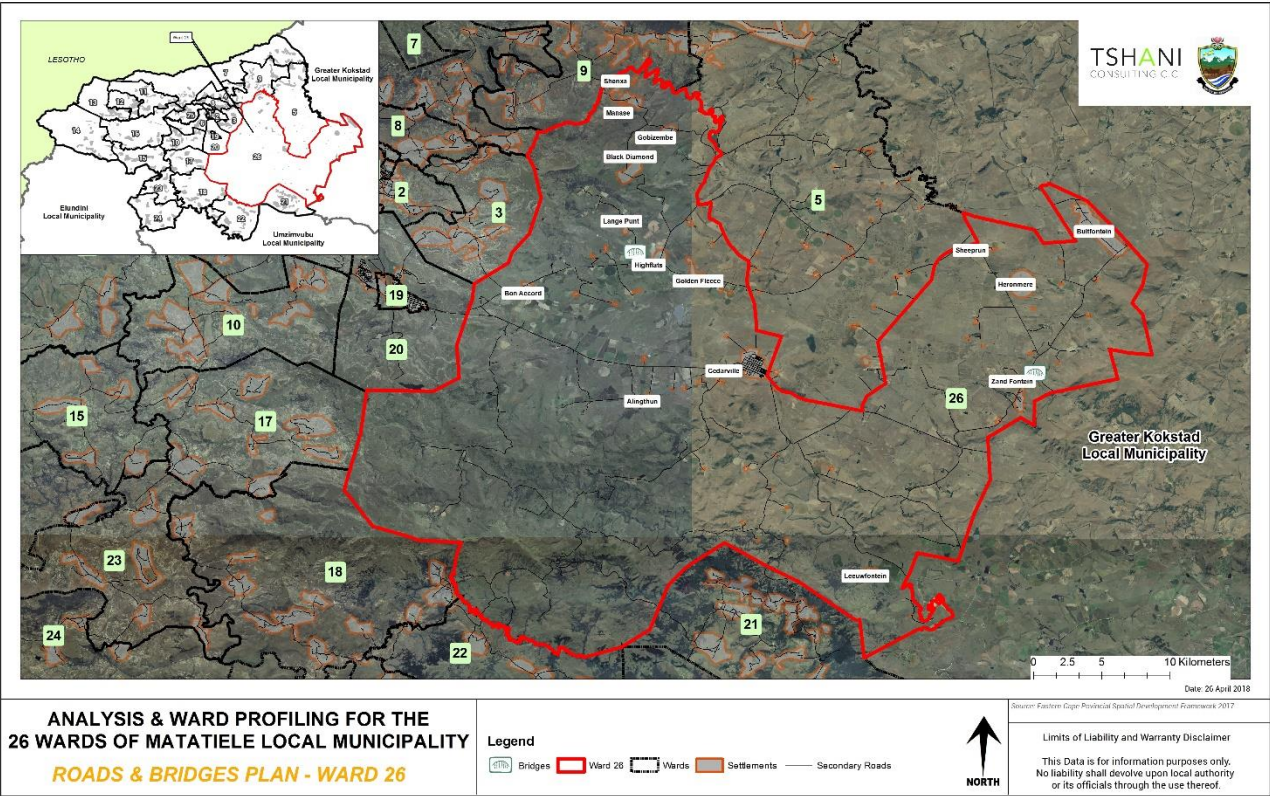
### 6.6. Roads and Bridges

The roads and bridges located within Ward 26, however they are in need of maintenance. The plan below picks up on the extent of roads networks which are present within he ward.

NAME AND TYPE	AREAS COVERED	CONDITION OF THE ROADS
Cedarville		
a.Street surfaced/tar road	Khorong koali park	Good
b.Mzingisi gravel access road& streets	Mzingisi location	Very bad
c.Cedarville town gravel streets	The whole town & coloured section	Very bad
d.Gravel/tar street	Khorong koali ext	Very bad
access road	Black Diamond	Very Bad
Access road	Sandfontein	good
P609 gravel road	New Amalfi road to Bultfontein	Very bad
D606, D625, and D636 gravel roads	Hido farm/MKmillitary veterans farm to New Amalfi grain sillos	No Access Road

P604 gravel road	From R56 to Mtshemula,Black Diamond,Gobizembe, Magasela,Shenxa,Cedarville farms and Mzongwana	Very Bad
Access Road	Bultfontein And Surrounding farms	Good
SANRAL	R56 Matatiele- Cedarville & surroundings farms	Accident route-bad(the road is very narrow and is of a great concern for accidents)
DR08066	From P604 to Makhoba A/A	Very bad

Table 20: Roads and Bridges within the Ward



Plan 9: Roads and Bridges within the Ward - MLM GIS

### 7. Current Projects

The following table highlighted the key projects which have been identified by the community. The projects are mainly linked to education. Further projects need to be targeted towards building a local economic base and spatial resilience.

No	PROJECT/PROGRAMME NAME	STATUS	WHO IS RESPONSIBLE
1	Black Diamond& Shenxa Water Project	On Progress	Andm
2	Maluti Special School Fencing	On Progress	Education



3	Thembalitsa School Water Project	Tendering Process	Education - Mvula Trust
4	Bultfontein School Water Project	Tendering Process	Education – Mvula Trust
5	Matatiele/Cedarville Feedlot Project	Planning Stage	DRDAR
6	Cedarville Megga School/ Asidi	Tendering Stage	Education
7	Route 56 Upgrade	tendering Stage	Sanral
8	Streets Lights Upgrade	Planning Stage	Eskom
9	Rate payers Prepaid electric project	On progress	Eskom
10	Black Diamond maize project	On progress	Old mutual-masisizane fund
11	Cedarville farms maize project	On progress	Old mutual-masisizane fund
12	Black Diamond community maize project	On progress	Grain SA& Department of DRDAR
13	School nutrition scheme/Food security	Planning stage	DRDAR

Table 21: Current project within ward- Community Based Planning Program 2017 (Data Collection)

## 8. Ward Needs and Priorities

The need and priorities which have been identified need to be prioritised in the municipal SDF and other local plans created. The projects range from short to long term projects and have been further broken down in the implementation plan.

Village/Location/ Sub Area	Needs Identified
Shenxa Village	Electricity ,Access Road, Agricultural Assistance, RDP House, Sport Field, pre-school
Black Diamond Village	Electricity, Agricultural Assistance, RDP Houses, Community Hall, Sport Field, Grave yard fencingB
Gobizembe	Electricity ,RDP Houses ,Water, Access Road, Sport Field
Magasela	Electricity, Water, RDP Houses, Access Roads, Sport Field
Bharini, Thebane& Dada	Electricity, Water ,RDP Houses, Farming Equipment, Sport Field
Matshemula	Housing, Water, Electricity, Farming Equipment, Sport Field
Cedarville	
Khorong Koali Ext	Electricity, Re – Surfacing Streets, Streets Lights,
Coloured Section	Streets Surfacing, Streets Light, Pre-1994 Houses Rectification, Sewer Upgrade/Sanitation. Sport Field
Khorong Koali Park	House Rectification ,Speed Humps, RDP Houses, Sport Field

Mzingisi Location	Sanitation Upgrade, Streets Lights, Street Surfacing,Pre-1994 House Rectification ,Sport Field
Cedarville Town	Road Surfacing,
Bultfontein	RDP Houses, Farming Equipment, Sport Field
Sandfontein	RDP Houses, Farming Equipment, Sport Field

Table 22: Ward Needs and Priorities- Community Based Planning Program 2017 (Data Collection)

## 9. Stakeholder within Ward

The table below highlights the stakeholders which were engaged with during the Community engagement sessions.

NAME OF STAKEHOLDER	CONTACT PERSON AND TEL
Traditional Leader- Chief Sibi	0712875767
Traditional Leader- Cheief Makhoba	0793059074
Senenjongo Luncheon	0711352464
Thusanang Organisation	0839977767
Imfuyo Farmers Association	0833805698
Disability Forum	0734507515
Marta veteran teachers	0718170972
Elders Forum	0799337047
Youth Forum	0710102132
Council of churches	0722398753

Table 23: Stakeholders within the Ward – Community Based Planning Program 2017 (Data Collection)

## 10. Social Challenges within Ward

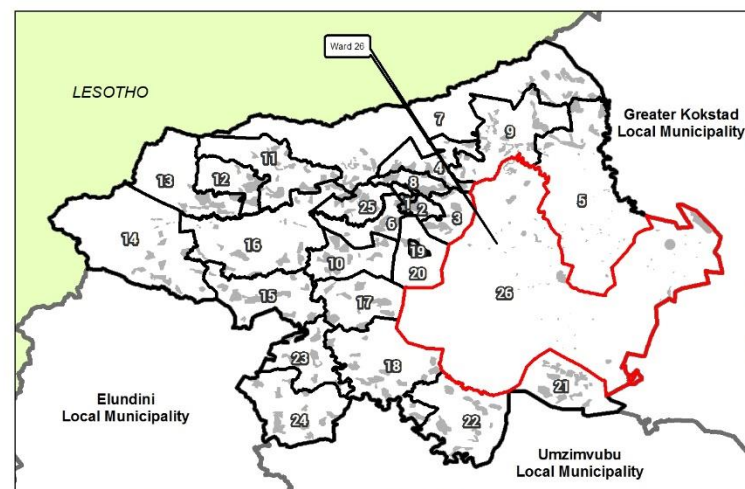
Challenges Identified	Affected Areas	Impact
High Teenage Pregnancies	All villages	Starvation, and Unemployment.
Unemployment	All Villages	Committing crime
Substance Abuse	All Villages	Destroying Future Of New Generation
Migrant And Refugees	All Villages	
Network Cable Theft	Cedarville	Offline / Network / Communication
Stock theft	All Villages/areas/farms	Decreasing the Improvement of the Economy
Limited job opportunities	All Villages	Invitation Of Investors



HIV/Aids	All villages	
----------	--------------	--

Table 24: Social Challenges within Ward





- Shenxa**  
- Electricity, Access Road, Agricultural Assistance, RDP House, SpotField, Preschool
- Black Diamond**  
- Electricity, Agriculture Assistance, RDP Houses, Community Hall, Sport Field, Graveyard Fencing
- Gobizembe**  
- Electricity, RDP Houses, Water, Access Road, Sport Field
- Magasela**  
- Electricity, Water, RDP Houses, Access Roads, SportField
- Bharini, Thebane, Dada**  
- Electricity, Water, RDP Houses, Farming Equipment, SportField
- Matshemula**  
- Electricity, Water, Houses, Farming Equipment, SportField
- Cedarville**  
a. Khorong Koali Ext. Electricity, Re-Surfacing Streets, Street Lights  
b. Coloured Section Street Surfacing, Street Light, Pre-Housing 1994 Rectification, Sewer Upgrade, SportField  
c. Khorong Koali Park House Rectification, Speed Hump, RDP House, SportField  
d. Mgingisi Location Sanitation Upgrade, Street Lights, Street Surfacing, Pre-Housing 1994 Rectification, SportField
- Bultfontein**  
- RDP Houses, Farming Equipment, SportField
- Sandfontein**  
- RDP Houses, Farming Equipment, SportField

## ANALYSIS & WARD PROFILING FOR THE 26 WARDS OF MATATIELE LOCAL MUNICIPALITY

**WARD PRIORITY - WARD 26**

- Legend**
- IRM
  - DRPW
  - Ward 26
  - Wards
  - Settlements
  - Secondary Roads



Source: Eastern Cape Provincial Spatial Development Framework 2017

**Limits of Liability and Warranty Disclaimer**

This Data is for information purposes only. No liability shall devolve upon local authority or its officials through the use thereof.

Date: 26 April 2018